

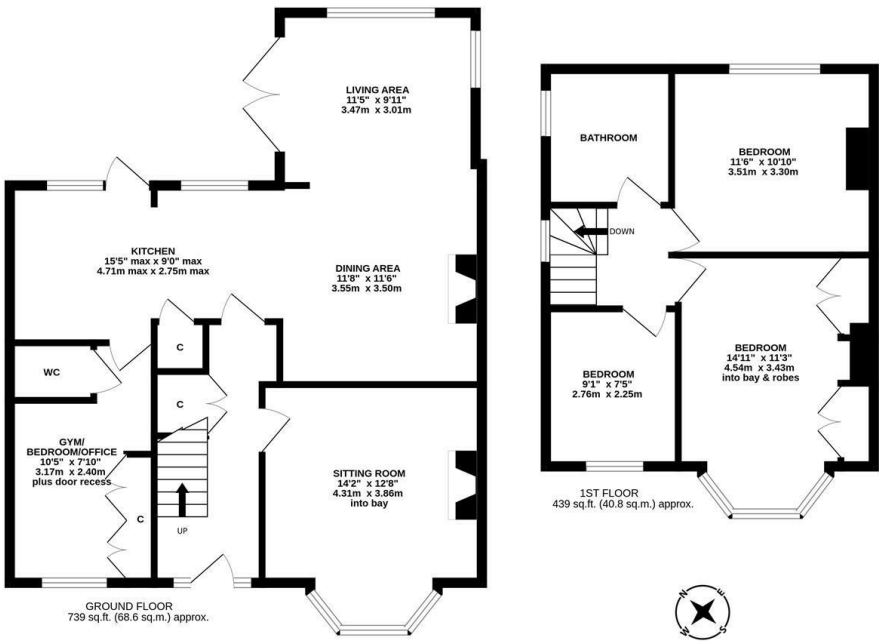


Well presented throughout, this delightful semi-detached family home is ideally located on Eastwood Gardens, Kenton. Close to excellent local schools, Eastwood Gardens positioned off Kenton Lane, provides perfect family accommodation close to the cafés, restaurants and shops of Gosforth High Street.

The accommodation briefly comprises: entrance hall with stairs to first floor and under-stairs storage cupboard; sitting room with walk in bay and feature fireplace; kitchen, open to dining area with feature wood burning stove, and then open to the living area, kitchen with a range of fitted units, work surfaces, under-stairs storage and spot lighting; gym/bedroom/office with fitted storage and WC. The first floor landing gives access to; three bedrooms, bedroom one with walk in bay and fitted wardrobe storage cupboards; family bathroom complete with four piece suite including walk in shower, freestanding bath and spot lighting

Externally, a block paved multi-vehicle driveway to the front providing off-street parking and to the rear, a delightful enclosed garden, laid mainly to lawn with a mixture of mature planting, paved pathways and patio seating areas. Early viewings are essential to avoid disappointment!

Semi-Detached Family Home | Well Presented Throughout | 1,178 Sq ft (109.4m2) | Three/Four Bedrooms | Sitting Room | Kitchen | Dining Area | Living Area | Gym/Bedroom/Office with WC | Family Bathroom with Four Piece Suite | Front Driveway | Delightful Rear Garden | Freehold | Council Tax Band B | EPC: C



Offers Over £335,000

IMPORTANT NOTE: These particulars and the descriptions and measurements herein do not constitute representation and whilst every effort has been made to ensure accuracy, this cannot be guaranteed.

